

PLANNING ACT 2008

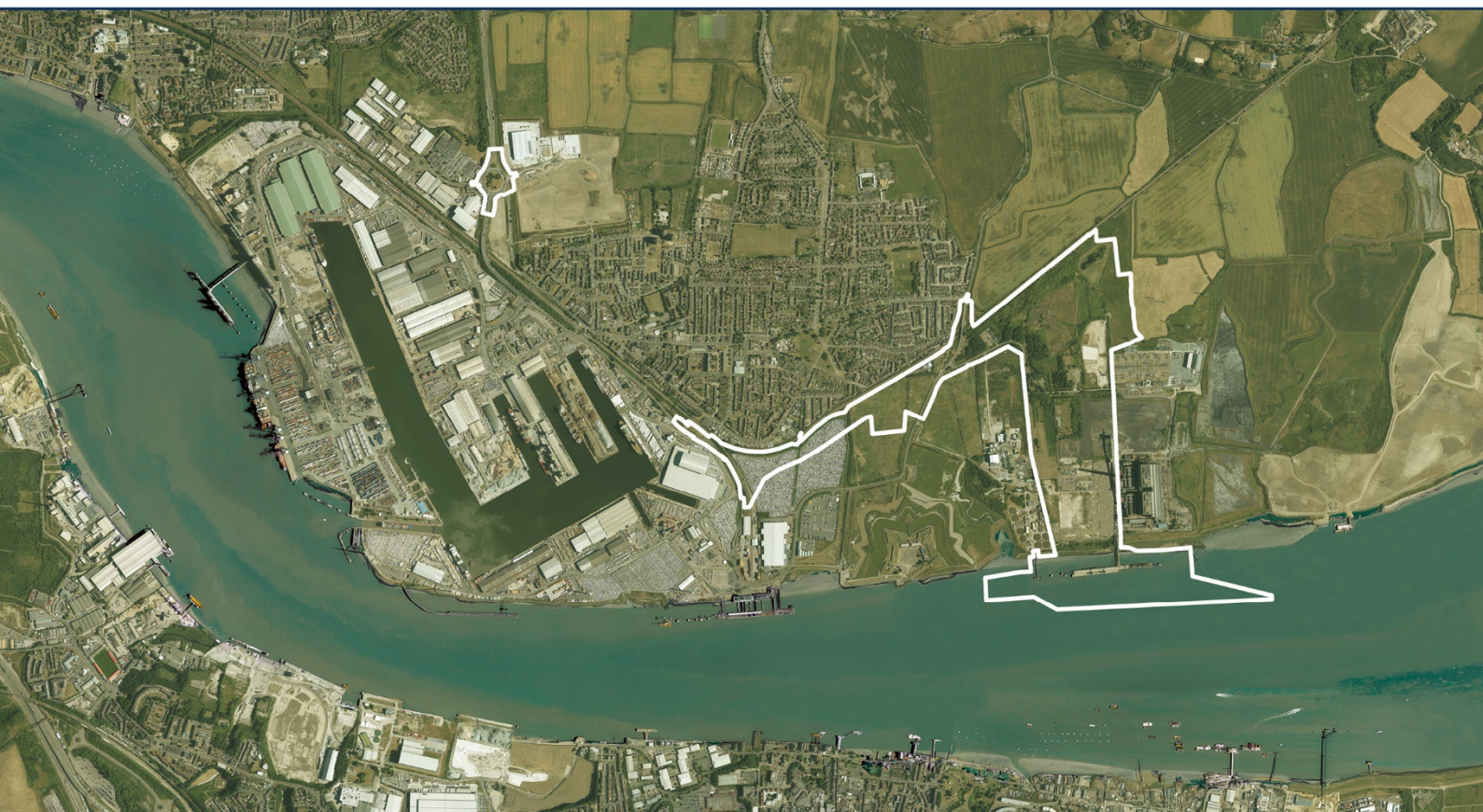
INFRASTRUCTURE PLANNING
(APPLICATIONS: PRESCRIBED FORMS AND PROCEDURE) REGULATIONS 2009

PROPOSED PORT TERMINAL AT
FORMER TILBURY POWER STATION

TILBURY2

REPTILE SURVEY RESULTS (2016-17)

DOCUMENT REF: APPENDIX 10.N



Appendix 10.N: Reptile survey data (2016-17)

2016 survey data

2016 survey data

Survey visit	Date (2016)	Peak reptile counts			
Infrastructure corridor: Fortland Distribution Park bund (see Figure 10.10a) (23 refugia / 0.5ha suitable habitat)					
		Adder	Common lizard	Grass snake	Slow-worm
1	20 September 2016	1	5	-	3
2	23 September 2016	-	-	-	-
3	26 September 2016	-	1	-	-
4	27 September 2016	-	4	-	1
5	29 September 2016	1	7	-	3
6	04 October 2016	2	-	-	-
7	06 October 2016	-	1	-	-
	Maximum counts:	2	7	-	3
	Per hectare figure*:	0.8	2.8	-	1.2
	Population size class:	low	low	n/a	low
Tilbury2 site: habitat east of Gatehouse (see Figure 10.10a) (25 refugia / 1.5ha suitable habitat)					
		Adder	Common lizard	Grass snake	Slow-worm
1	02 June 2016	1	-	-	6
2	30 June 2016	1	2	1	6
3	04 July 2016	3	2	-	6
4	14 July 2016	6	1	1	19
5	20 September 2016	-	-	1	1
6	27 September 2016	-	2	1	-
7	29 September 2016	-	-	1	-
	Maximum counts:	6	2	1	19
	Per hectare figure*:	2	0.7	0.3	6.3
	Population size class:	low	low	low	good

* Figures adjusted for area, and for refugia installed at multiples of the required density (HGBI guidelines¹ recommend 5-10 refugia per hectare).

¹ Herpetofauna Groups of Britain and Ireland (1998) Evaluating local mitigation/translocation programmes: Maintaining Best Practice and lawful standards. HGBI advisory notes for. Amphibian and Reptile Groups.

2017 survey data

Survey visit	Date (2017)	Peak reptile counts			
Infrastructure corridor: Fortland Distribution Park bund (see Figure 10.10b) (20 refugia / 0.5ha suitable habitat)					
		Adder	Common lizard	Grass snake	Slow-worm
Supplementary survey visit	19 April 2017	-	2	-	1
1	30 April 2017	-	5	-	7
2	07 May 2017	1	4	-	9
3	10 May 2017	-	1	-	13
4	18 May 2017	2	8	-	19
5	30 May 2017	1	6	-	21
6	04 June 2017	1	2	-	4
7	09 June 2017	2	9	-	25
	Maximum counts:	2	9	0	25
	Per hectare figure*:	0.5	2.3	0	6.3
	Population size class:	low	low	low	good
Tilbury2 site: Common land (see Figure 10.10b) (12 refugia / 1 ha suitable habitat)					
		Adder	Common lizard	Grass snake	Slow-worm
Supplementary survey visit	19 April 2017	-	-	-	2
1	30 April 2017	-	-	-	2
2	07 May 2017	-	-	-	5
3	10 May 2017	-	-	-	2
4	20 May 2017	-	-	-	6
5	30 May 2017	-	-	-	4
6	04 June 2017	-	-	-	2
7	09 June 2017	-	4	-	8
	Maximum counts:	0	4	0	8
	Per hectare figure*:	0	3.7	0	6.7
	Population size class:	-	low	-	good

Survey visit	Date (2017)	Peak reptile counts			
Tilbury2 site: A-station (see Figure 10.10b) (26 refugia / 1.1ha suitable habitat)					
		Adder	Common lizard	Grass snake	Slow-worm
Supplementary survey visit	19 April 2017	2	-	-	1
1	30 April 2017	1	3	1	5
2	07 May 2017	-	2	-	1
3	10 May 2017	1	-	-	2
4	18 May 2017	3	1	-	10
5	30 May 2017	1	3	-	13
6	04 June 2017	3	2	-	4
7	09 June 2017	-	-	-	4
	Maximum counts:	3	3	1	13
	Per hectare figure*:	1.0	1.0	0.3	4.5
	Population size class:	low	low	low	low
Tilbury2 site: Riverside meadow (see Figure 10.10b) (11 refugia / 1 ha suitable habitat)					
		Adder	Common lizard	Grass snake	Slow-worm
Supplementary survey visit	19 April 2017	1	2	-	1
1	30 April 2017	-	2	-	6
2	07 May 2017	3	1	-	7
3	10 May 2017	1	2	-	5
4	18 May 2017	2	1	-	13
5	30 May 2017	-	-	-	24
6	04 June 2017	-	-	-	5
7	09 June 2017	-	-	-	3
	Maximum counts:	3	2	0	24
	Per hectare figure*:	2.7	1.8	0	21.8
	Population size class:	low	low	-	exceptional

Survey visit	Date (2017)	Peak reptile counts			
Tilbury2 site: Coal-field (see Figure 10.10b) (16 refugia / 1.7 ha suitable habitat)					
		Adder	Common lizard	Grass snake	Slow-worm
Supplementary survey visit	19 April 2017	1	-	-	1
1	30 April 2017	-	-	-	-
2	07 May 2017	-	-	-	-
3	10 May 2017	-	1	-	-
4	18 May 2017	-	-	-	-
5	30 May 2017	-	2	-	1
6	04 June 2017	-	-	-	-
7	09 June 2017	-	-	-	2
	Maximum counts:	1	2	0	2
	Per hectare figure*:	0.4	0.7	0	0.7
	Population size class:	low	low	-	low
Tilbury2 site: TEEC (see Figure 10.10b) (55 refugia / 5.2 ha suitable habitat)					
		Adder	Common lizard	Grass snake	Slow-worm
Supplementary survey visit	19 April 2017	-	-	-	-
1	30 April 2017	-	-	-	3
2	07 May 2017	1	-	-	3
3	10 May 2017	-	2	-	4
4	18 May 2017	3	3	-	6
5	30 May 2017	-	3	-	15
6	04 June 2017	1	-	3	5
7	09 June 2017	-	2	1	6
	Maximum counts:	3	3	3	15
	Per hectare figure*:	0.5	0.5	0.5	2.7
	Population size class:	low	low	low	low

Survey visit	Date (2017)	Peak reptile counts			
Tilbury2 site: Owl House & Gatehouse (see Figure 10.10b) (24 refugia / 1 ha suitable habitat)					
		Adder	Common lizard	Grass snake	Slow-worm
Supplementary survey visit	19 April 2017	-	2	-	-
1	30 April 2017	-	-	-	-
2	07 May 2017	-	2	-	1
3	10 May 2017	-	-	-	-
4	20 May 2017	1	1	-	-
5	30 May 2017	-	2	-	4
6	04 June 2017	1	1	-	-
7	09 June 2017	-	-	-	3
	Maximum counts:	1	2	0	4
	Per hectare figure*:	0.4	0.8	0	1.7
	Population size class:	low	low	low	low
Tilbury2 site: Northern Area (see Figure 10.10b) (104 refugia / 10.5 ha suitable habitat)					
		Adder	Common lizard	Grass snake	Slow-worm
Supplementary survey visit	19 April 2017	1	7	-	2
1	30 April 2017	-	10	-	5
2	07 May 2017	-	7	-	5
3	10 May 2017	1	7	-	2
4	20 May 2017	2	31	-	17
5	30 May 2017	1	7	-	22
6	04 June 2017	6	14	3	18
7	09 June 2017	3	15	4	30
	Maximum counts:	6	31	4	30
	Per hectare figure*:	0.6	3	0.4	2.9
	Population size class:	low	low	low	low

* Figures adjusted for area, and for refugia installed at multiples of the required density (HGBI guidelines recommend 5-10 refugia per hectare).